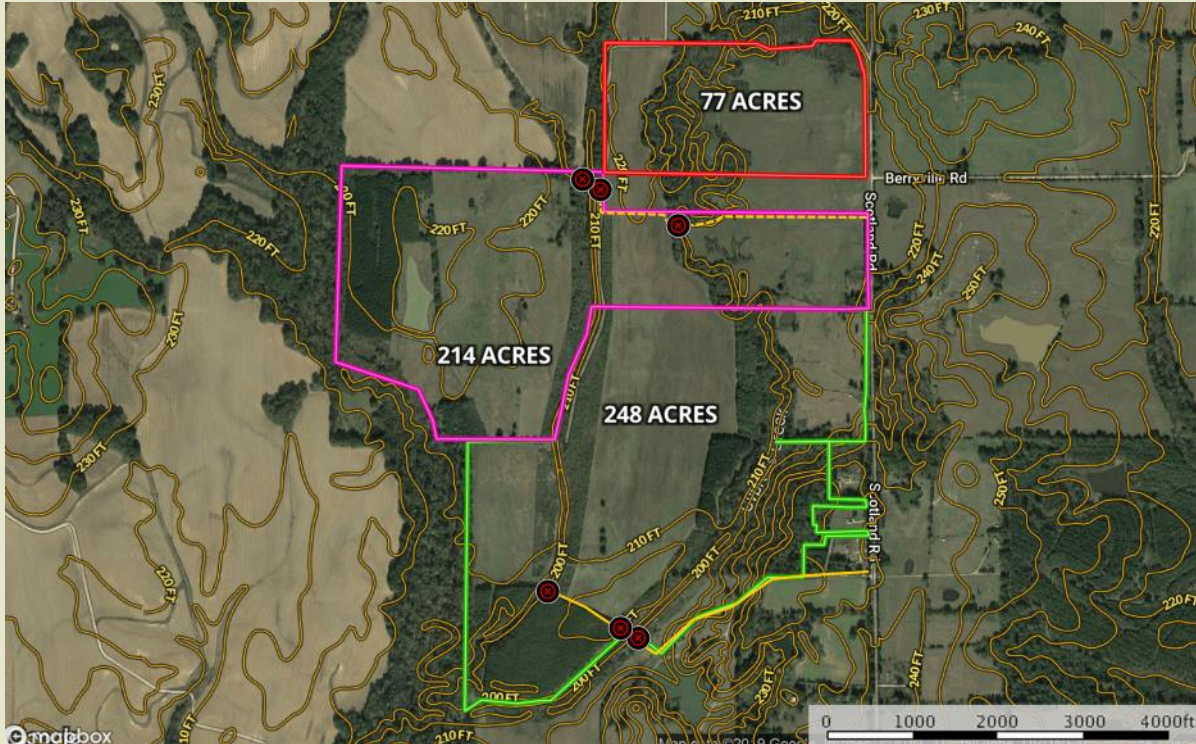




**Sartain's Heritage**  
Properties, LLC.  
www.SartainsHeritage.com

# Argyle Farm 77 Acres +/- Yazoo County, MS



**CONTACT:**

**JOE MALLARD**  
601-927-8222

[jmallard@sartainsheritage.com](mailto:jmallard@sartainsheritage.com)



Sartain's Heritage Properties  
106 First Choice Drive  
Madison, MS 39110  
Phone: 601-856-2720  
Fax: 601-853-6765  
[www.SartainsHeritage.com](http://www.SartainsHeritage.com)

**Property:**

Argyle Farm, 77 acres located in Southeast Yazoo county in the Scotland Community. Currently in pasture with Cypress Creek running through the middle of the property. Woodland along the creek and higher ground on the west side of the property. Topography is flat with the potential for waterfowl impoundment and hardwood CRP in the open areas. Well located for small recreational tract close to Jackson.

**Location:** Section 31-T11N-R1E, Yazoo County, MS. Located at the intersection of Scotland and Berryville Road. Thirteen miles north-east of Bentonia and forty minutes from Jackson up I-55.

**Land Use:** Pasture – 51 Acres  
Woodland – 25 Acres

**Price:** 77 acres \$308,000.

**Contact:** Joe Mallard at 601.927.8222 or  
[jmallard@sartainsheritage.com](mailto:jmallard@sartainsheritage.com)



All information contained herein is supplied by sources deemed reliable, but is not guaranteed by Sartain's Heritage Properties, its Brokers or Agents. Properties are subject to errors, omissions, correction, price change, prior sale or withdrawal without notice.