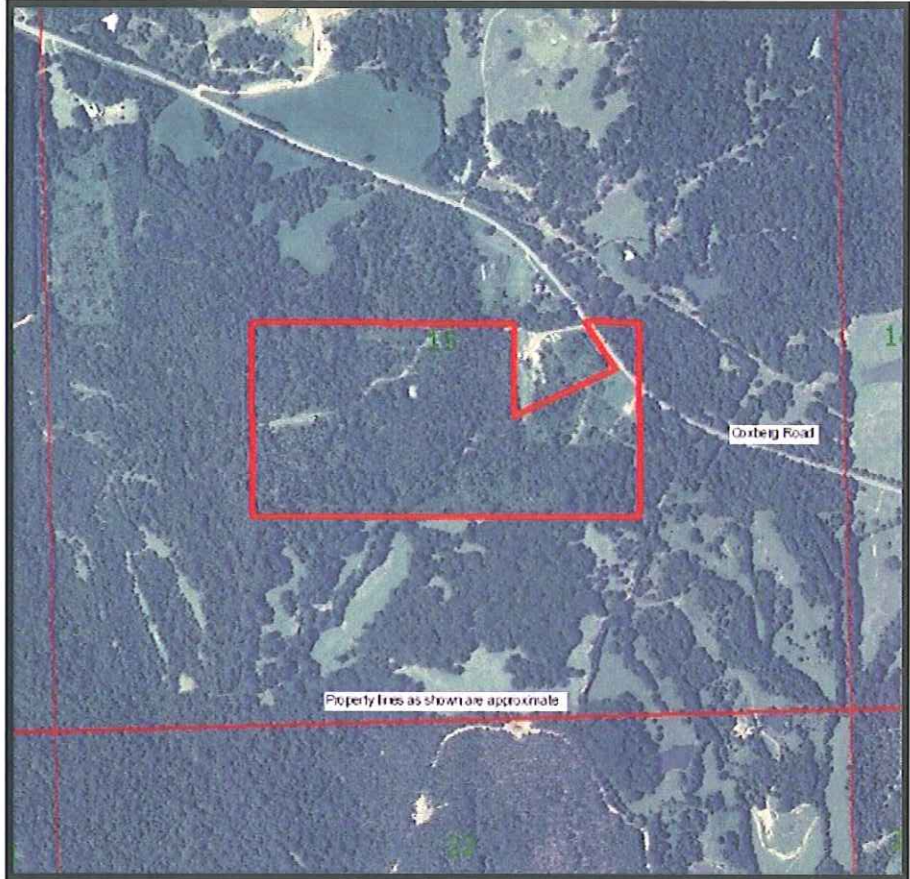




**Sartain's Heritage**  
Properties, LLC.  
www.sartainsheritage.com

# Coxberg

72.7 Acres +/-  
Holmes County, MS



**CONTACT:**  
**J. PARKER SARTAIN**  
601.506.2398  
psartain@sartainsheritage.com

Sartain's Heritage Properties  
106 First Choice Drive  
Madison, MS 39110  
601.856.2720  
Fax: 601.853.6765  
www.SartainsHeritage.com

**COXBERG** – 72.7 +/- acres one mile north of the Yazoo County line in southern Holmes County. The property features frontage on Coxberg Road with a Cleared Camp Site, Community Water Service and Sewer Treatment Plant in place.

Being strategically located near Hillside NWR and Morgan Brake NWR, open additional deer and duck hunting opportunities. Mixed hardwoods and pines with a pond, creek, ATV trails, six food plots, three shooting houses, nine deer stands, four feeders and rolling hills makes this the perfect small hunting tract and year round weekend get away.

**\$2250.00 per acre**

