



Sartain's Heritage
Properties, LLC.
www.SartainsHeritage.com

Cypress Point Plantation Estate Home & 142 Acres +/- Yazoo County, MS



CONTACT:

ROB COKER

662-571-7348

rcoker@sartainsheritage.com

Sartain's Heritage Properties

106 First Choice Drive

Madison, MS 39110

Phone: 601-856-2720

Fax: 601-853-6765

www.SartainsHeritage.com

9402 MS Hwy. 149
Yazoo City, MS 39194

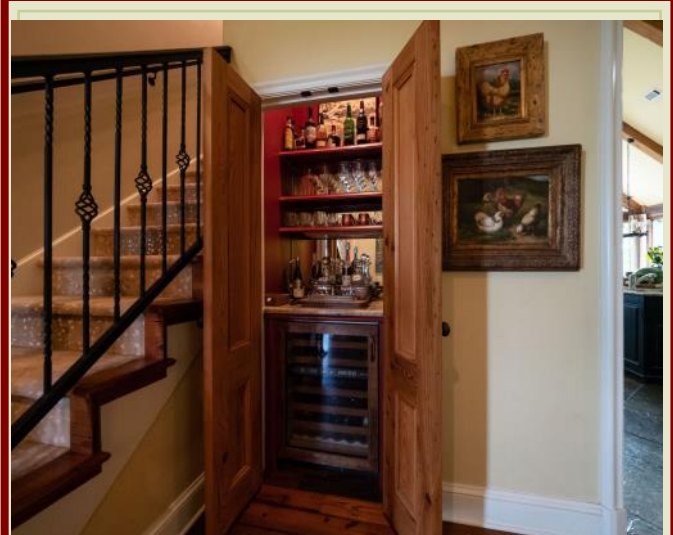
Are you wanting your own piece of heaven on earth? This breathtaking home and so much more will make you think you are on permanent vacation. Situated on the banks of the confluence of Broad Lake and Wolf Lake is Cypress Point Plantation in Yazoo County, MS. Wolf Lake is well known for great fishing, boating and water skiing.

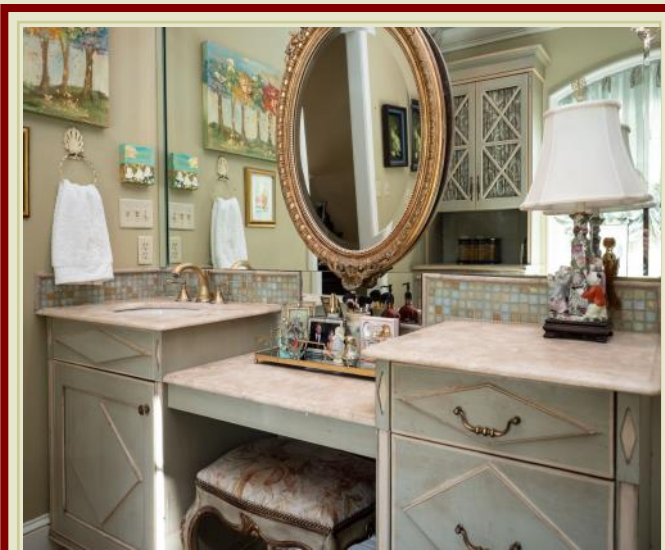
The property consists of 142 acres with a custom built 6355 square foot, five bedroom, three and one-half bath estate home with a chef's kitchen, large mud room, 2 laundry rooms, screened in porch with fireplace, infinity swimming pool, pool house half bath and storage, Outdoor Kitchen/Cabana overlooking a magnificent view of the lake. Floor to ceiling windows showcase the gorgeous outdoor views. Other amenities include a 7-stall equestrian facility and office, riding arena, pastures, two lakes, a producing Pecan Orchard, private boat launch and storage shed. The layout of Cypress Point was planned with up to 10 waterfront lots that can be sold along the Lake.

Located only six miles west of Yazoo City fronting Highway 149, only minutes away from some of the finest public/private waterfowl and whitetail hunting the Mississippi Delta has to offer and a short fifty-minute drive to the Jackson Metro.

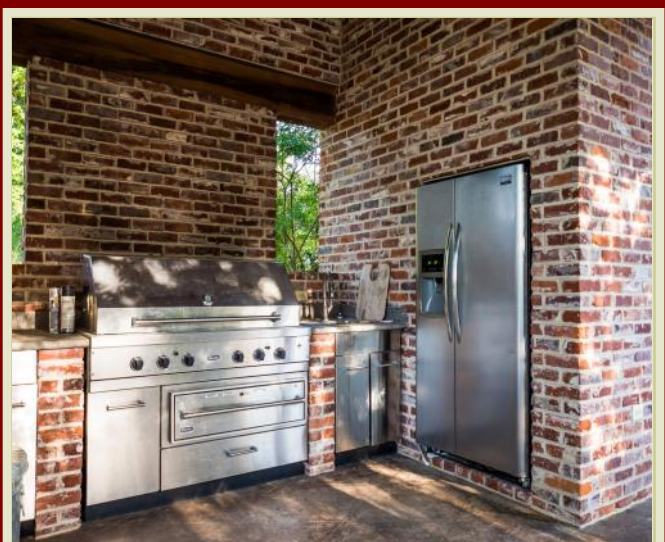
\$2,100,000.00













All information contained herein is supplied by sources deemed reliable, but is not guaranteed by Sartain's Heritage Properties, its Brokers or Agents. Properties are subject to errors, omissions, correction, price change, prior sale or withdrawal without notice.

