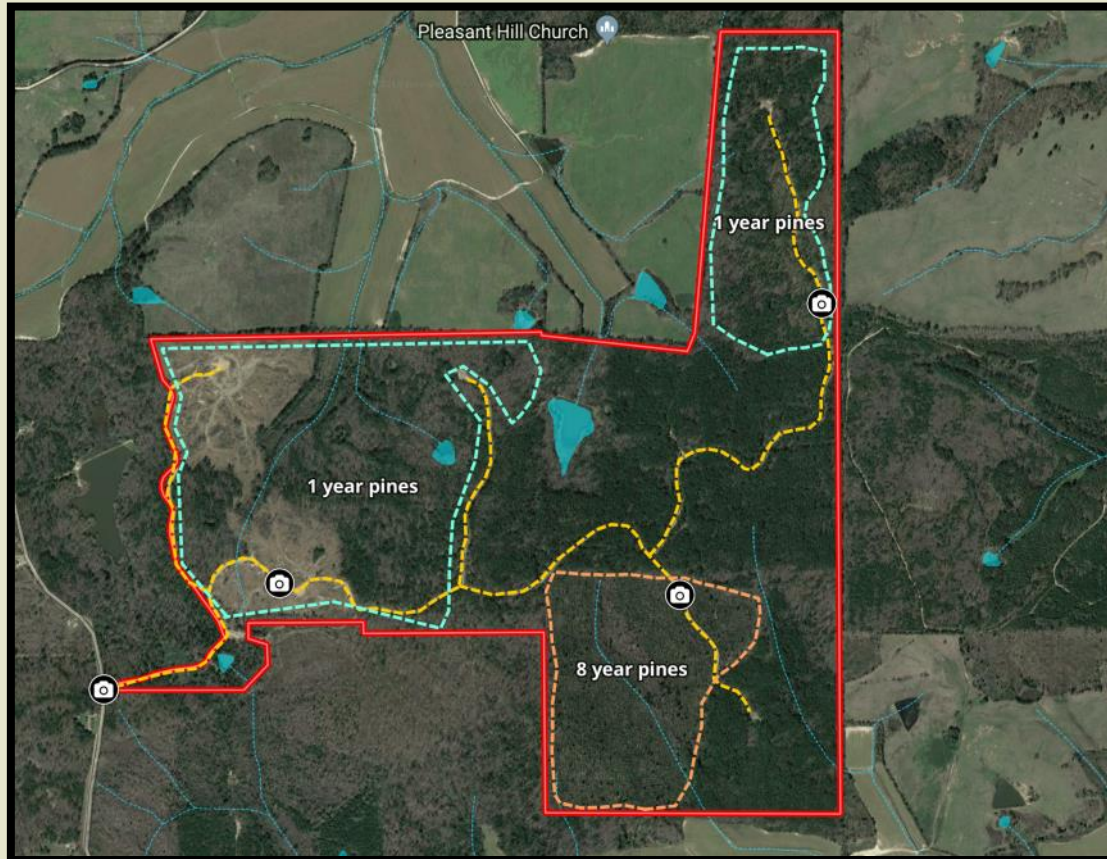




Sartain's Heritage
Properties, LLC.
www.SartainsHeritage.com

DIVIDING RIDGE

530 acres +/-
Grenada County, MS



CONTACT:

J. PARKER SARTAIN
601.506.2398
psartain@sartainsheritage.com

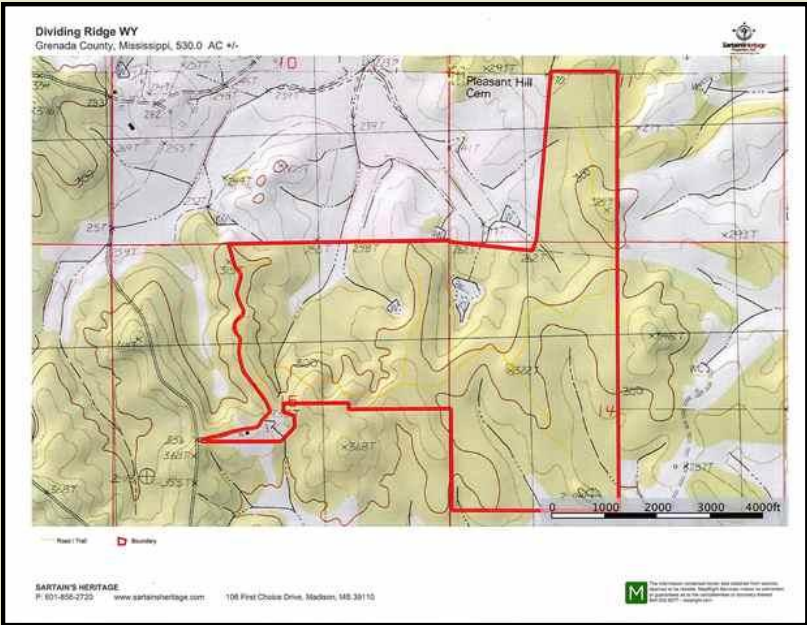
Sartain's Heritage Properties
106 First Choice Drive
Madison, MS 39110
Phone: 601-856-2720
Fax: 601-853-6765
www.SartainsHeritage.com

530 +/- acres located in Sections 11, 14 and 15, T22N, R7E, Grenada County, Mississippi, fronting Dividing Ridge Road approximately one half mile north of Highway 8 in the Gore Springs area.

The tract consists of 112 +/- acres of one year replanted pines creating great browse and bedding areas for Whitetail Deer, 70 +/- acres of eight year pine plantation, 140 +/- acres of twenty-eight to fifty four year pine plantation which is excellent turkey habitat. The internal road system is in very good condition, there are three small ponds located about the property and utilities are available along Dividing Ridge Road.

This property is conveniently located 18 miles east of Grenada and only 8 miles from the South Greysport Boat Landing on Grenada Lake.

\$1,025,821.00



All information contained herein is supplied by sources deemed reliable, but is not guaranteed by Sartain's Heritage Properties, its Brokers or Agents. Properties are subject to errors, omissions, correction, price change, prior sale or withdrawal without notice.