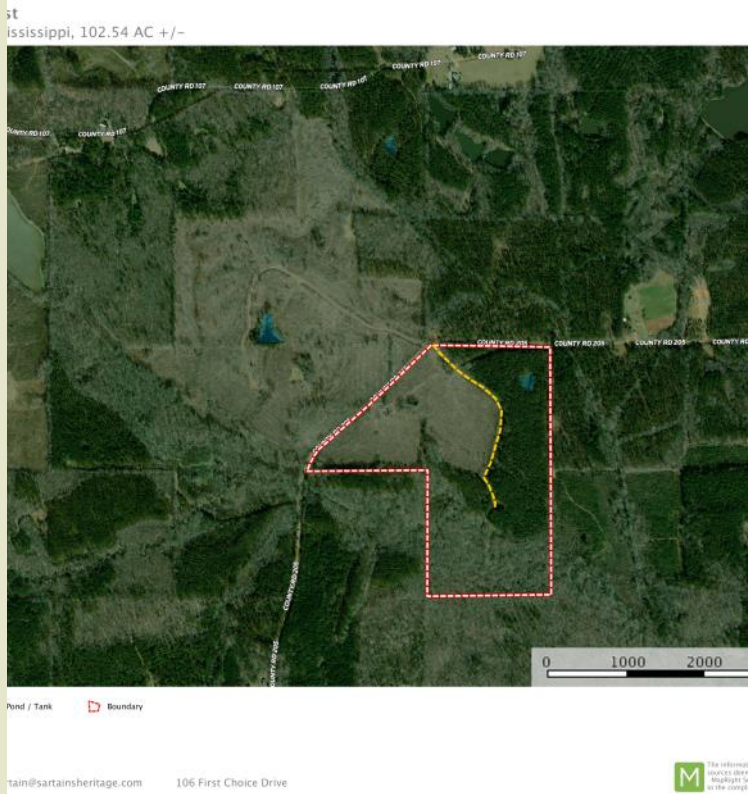




**Sartain's Heritage**  
Properties, LLC.  
www.SartainsHeritage.com

# Spring Creek East 102.54 Acres +/- Webster County, MS



**CONTACT:**  
**J. PARKER SARTAIN**  
 601.506.2398  
 psartain@sartainsheritage.com

Sartain's Heritage Properties  
 106 First Choice Drive  
 Madison, MS 39110  
 Phone: 601-856-2720  
 Fax: 601-853-6765  
 www.SartainsHeritage.com

EXCLUSIVE PARTNER OF  


**Spring Creek East**  
 102.54 acres in Sections 23 and 26, T21N, R10E, Webster County, MS, 10 miles north of Eupora. The property has approximately 1900 feet of frontage on County Road 205 (Buster Vaughn Road) along the west boundary.

The timber consists of 35 acres of one year replanted pines with the balance in older age pines and hardwood Streamside Management Zones along Spring Creek creating a wildlife travel corridor through the property for deer hunting and turkey hunting. There is one small pond, and an interior road into the heart of the property. An additional 119 acres is available on the west side of County Road 205.

Being located only 26 miles west of Starkville, this a great recreational tract close to MSU sporting events and dining at the numerous restaurants in town.

**\$199,953—\$1950 per acre**

All information contained herein is supplied by sources deemed reliable, but is not guaranteed by Sartain's Heritage Properties, its Brokers or Agents. Properties are subject to errors, omissions, correction, price change, prior sale or withdrawal without notice.



All information contained herein is supplied by sources deemed reliable, but is not guaranteed by Sartain's Heritage Properties, its Brokers or Agents. Properties are subject to errors, omissions, correction, price change, prior sale or withdrawal without notice.



All information contained herein is supplied by sources deemed reliable, but is not guaranteed by Sartain's Heritage Properties, its Brokers or Agents. Properties are subject to errors, omissions, correction, price change, prior sale or withdrawal without notice.